



The Shepherd's Voice

Serving Rockland County, NY, & Northern Bergen County, NJ

February 2016

Reaching and Risking to Welcome the World in the Word that has come among us in Jesus Christ.

ASH WEDNESDAY—February 10th

Services: 12:15 p.m.—Service of Holy Communion
with Imposition of Ashes
8:00 p.m.—Service of Holy Communion
with Imposition of Ashes



*Good Shepherd Lutheran Church
Celebrating 115 yrs. on Feb. 20th*



FROM OUR PASTOR

"Do not remember the former things, or consider the things of old. I am about to do a new thing; now it springs forth, do you not perceive it? I will make a way in the wilderness and rivers in the desert. The wild animals will honor me, the jackals and the ostriches; for I give water in the wilderness, rivers in the desert, to give drink to my chosen people, the people whom I formed for myself so that they might declare my praise." - Isaiah 43: 18-21

Beloved of God,

As I write this, I have just arrived into a flurry of activity and many joyful, excited greetings. And I am overwhelmed at your kind, lovely welcome. Thank you! I am barely yet catching my breath and certainly haven't unpacked my office; but, I am already writing you a letter about Lent coming up!

This seems to me a bit rushed.

However, Easter (which is determined by the Western Church to be the first Sunday after the first full moon after the vernal equinox) is really early this year and so Lent begins very near the beginning of February. Rushed or not, here we are.

Though, after some thought, maybe this is actually just right. When I think of Lent, after all, I tend to think of spring (not at all original to me since the word "Lent" comes from the old English word that means spring), which is always seen as a time of beginnings.

But, I don't tend to think of Lent being the point in spring when the daffodils are in full yellow splendor or even a little earlier in the season when the crocuses are poking their glorious little heads out of the ground. Instead, I tend to think of *really early* spring. The point in spring when the seeds, ordered from the January catalogues, start to show up in the mail and the seed trays start to get planted. I think of that early point in spring when gardeners begin to venture outside to clear away the dead plant matter to expose the soil so that new things might sprout and grow. I think of that point in spring when the ground starts to get muddy and starts to smell like living earth again (you know, like how this early January has felt!). That, to me, is Lent.

Lent is a time for us to be gardeners of our spirits. The practices of gathering for worship and learning mid-week, of extra prayer and fasting, of confession and contemplation, are the tools of cultivation. They are to help us to take stock and plant seeds and hopes that take time and care to grow, to clear away old clutter and dead things that smother out what might want to grow in us, to become reacquainted with the smell of the bare dirt of our beings so that we are ready for the new growth and new life that Easter promises to bring.

And, well, maybe this is just the perfect time to start together: this time of planting, clearing, dreaming and growing. I look forward to it with the same anticipation that a gardener looks to spring.

See you in worship!

Pastor Lena

A full schedule of events on Wednesdays in Lent, can be found on page 7.

**The Evangelical Lutheran
Church of the Good Shepherd**

112 North Main Street
Pearl River, New York 10965

OUR MISSION

**“Welcoming the World in the
Word that has come among us
in Jesus Christ”**

WORSHIP

Sundays: 8:15, 9:30, & 10:30 a.m.

CONTACT US

Church Office: (845)735-2243

Fax: (845)735-0819

E-mail: office@gspr.org

Web site: www.gspr.org

Creative Play Pre-School: (845)735-2737

AT YOUR SERVICE

The Reverend J. Lena Warren, Pastor
Kenneth Merring - Council President
Robert Bergman - Treasurer
Maureen Connolly - Creative Play Director
Dale Damon - Church Secretary
Brenda Ferguson - Organist/Director of Music
Dagmar Klein - Church Administrator
Janet Maleskii - Council Secretary
The Reverend John R. Taylor - Pastor Emeritus

Voice Publication Deadline

Items to be included in *The Shepherd's Voice* must be submitted to the church office by **February 12th**, for the March 2106 issue. Electronic submission (e-mail) is preferred. Articles submitted after the deadline may not be published, due to space and time restrictions. Please e-mail articles to: secretary@gspr.org.

GET YOUR COPY OF THE “VOICE” E-MAILED....

It will be exactly the same *Voice* that you've been receiving through the mail, but delivered via e-mail instead. That way you receive your copy faster, and we save on mailing expenses. To sign up for the *e-Voice*, send an e-mail to secretary@gspr.org, as well as the e-mail address you'd like us to use.

LIFE STATIONS

In Memoriam

Nancy Kinard	12/19/15
Gerald Rothbart	01/07/16
Donald Liebert	01/08/16

General Memorial Fund

In memory of Nancy Kinard	given by Irmgard Oelkers
In memory of Gerald Rothbart	given by William Schmeelcke

Good Shepherd Fund

In memory of Don Liebert	given by The Men's Breakfast Group
In memory of Gerry Rothbart	given by The Men's Breakfast Group

2016 CHURCH COUNCIL

Pastor Lena Warren
Ken Merring, Council President
Robert Bergman, Treasurer*
Janet Maleski, Secretary
Rob Bayer
Werner Boecker
Barbara Bow
Robert Callan*
James Cleary
Wendy Gates
Trish Habas
Steve Habina
Jayne Knarich
Deanna Lauer
Carole Meehan
Herman Mensing
Richard Struck
Debra Thaler
Don Widmayer

*indicates non-voting

MEN'S BREAKFAST GROUP

Good Shepherd's Men's Breakfast Group meets on the third Saturday of every month, at 9:00 am in the Church Parlor. The February breakfast will take place on the 20th. All men of Good Shepherd are invited to join in for fellowship and a great breakfast!

PRAYER CHAIN

If you, a loved one, or a friend experience difficulty and you desire prayer support, the Good Shepherd Prayer Chain may be helpful.

When you have a request or a thanksgiving to share, please call: lone Mensing at 201-664-1235; email: himensing@gmail.com or Carol Westphal at 845-624-5732; email: carolwestphal9@gmail.com

The Prayer Chain will then be activated, and many will be praying with and for you.

FIFTH ANNUAL GOOD SHEPHERD TURKEY RUN A HUGE SUCCESS

In case you haven't heard, we were able to deliver **60 turkeys** and **60 grocery bags** to Pastor Larry McFarland at Epiphany Lutheran Church and Pastor Jonathan Recabarren at Fordham Lutheran Church, both in the Bronx. Even though turkey distribution was not scheduled to begin for two hours, the potential recipients at Epiphany were already gathered on the sidewalk and we heard many "Thank You's" and other expressions of gratitude as we unloaded. We pass these "Thank You's" on to you, the generous people of Good Shepherd. At Fordham Lutheran, three personable and energetic members of Pastor Jonathan's Confirmation Class helped us unload. What a pleasure it was to meet and to work with them! You should know that close to 20 of your fellow church members volunteered to drive, sort groceries, pack bags, load the cars, and count to make sure we had an equal number of bags and turkeys. It is especially noteworthy that this was a multigenerational effort, with Good Shepherd volunteers from age 3 to age 73 taking part! We're all looking forward to next year.

ON SUPERBOWL SUNDAY (Feb. 7th) LET'S HAVE A "SOUPER" BOWL OF CARING

Starting January 17thth, we will be collecting cans of soup to fight hunger in our community. With all the snacking and feasting we enjoy while watching football, let us share with others, and fill the shelves of *People to People*.



Check us out on the web at:

www.gspr.org

and CHECK US OUT ON FACEBOOK TOO!

LENTEN SOUP SUPPERS

This Lenten season, we will be gathering here at Good Shepherd on Wednesday evenings, as a church family, to share a meal. At 6:00 p.m. we will be serving a simple soup supper, cooked and served by five groups from our church.

This isn't the first time each of these groups has volunteered and we can guarantee some delicious soups and Rockland Bakery bread.

We hope you will give yourself a break and take advantage of this nurturing hospitality and opportunity for good fellowship. We will put out a basket for a free-will offering. After expenses the proceeds will benefit the young people from our church who will attend the next National Youth Gathering.

The Soup Suppers will all be on Wednesdays, from February 17 through March 16. See you there.



Enjoy the Convenience of Online Giving

Good Shepherd Church wants to remind you that you can give to the church through our "eOffering" website link at www.gspr.org. We offer an online giving option as a way to automate your regular weekly and special offerings. Electronic giving offers convenience for individual congregational members and provides much-needed donation consistency for our congregation.

eOffering can direct debit your checking or savings account in the amount and frequency you choose, and transfer those payments directly to Good Shepherd's bank account.

To set up your online eOffering account, please visit Good Shepherd Church's website (www.gspr.org), look for the word "Give" in the box on the lower left hand side of the home page, and click "eOffering" to enter Online Giving. Click to create a new profile and follow the directions on the page. Once you create a profile, you can, at any time, set up an automatic donation plan, change your donation plan, make a one-time donation, or view your online donation history.

As you contemplate future financial contributions to Good Shepherd Church, please consider electronic giving. The church office can provide you with additional information. If you have any questions or need assistance setting up an eOffering profile, you can also contact Rich Bowman at (845) 627-6967 or by email at rpbp@yahoo.com.

CREATIVE PLAY NEWS



Thank you to all our families who so generously donated a "white Christmas" gift and/or hats and gloves for our needy families during the holiday season. There was a wonderful outpouring of giving, and we truly appreciate your thoughtfulness.

Families will have another opportunity to teach their child about sharing with those who are less fortunate. Our classes will be reading the story, *STONE SOUP*, where the children will learn about sharing, and caring for those in need. We invite every family to donate a can of soup during the weeks of January 25th and February 1st. All donations will be brought to *People to People*, and our program will run consecutively with the church donations of soup for *SOUPER BOWL* Sunday. What a wonderful chance to teach the values of caring for those in need!

February at Creative Play brings many exciting days, like Chinese New Year, Valentine's Day, and Dentist Day. We learn we can't eat all that delicious valentine candy!

Applications for our 2016-17 school year are available in the school office; please help spread the word about our fun and educational school programs. Our Toddler/Time for Twos program and our Summer Camp will begin registration on March 29th; more information to follow.

Maureen Connelly, director

The next meeting of WELCA will be on Tuesday, February 2nd, at 1:30 PM in the parlor. We extend a warm welcome to all ladies of Good Shepherd. We have a short business meeting, a program and then some delicious refreshments and social time.

We are once again, putting together Personal Care Kits for LWR a the collection bin is in the entrance to the education building. These kits are much needed and appreciated. The kits are to contain the following items:

- 1 52" x 27" (approx.) dark color bath towel
- 2 Bath size bars of soap in original wrap
- 1 Adult toothbrush in original wrap
- 1 Sturdy comb, remove packaging
- 1 Metal nail clipper, remove packaging



Wrap items in towel and tie with ribbon or yarn. Do Not add or leave out items. Do not enclose kit in a plastic bag.

Please put completed kits in the bin. Thank you. If you have any questions or need a ride, please call Barbara Bow at 845-215-5866 or Mary Iseman at 623-7638.

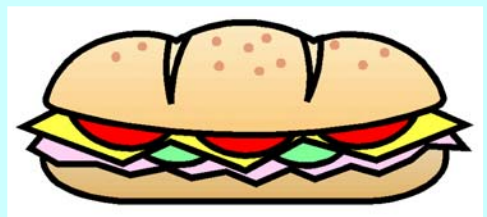
ADULT CHRISTIAN EDUCATION

Food, Faith & Friends Meets Tuesday, February 16, from 7 to 8:30 pm

We cordially invite you to join us for Food, Faith & Friends on Tuesday, February 16, from 7 to 8:30 p.m., in the church parlor. Come share in this opportunity to meet new people of all ages, share a little about our faith journeys (including our questions), and eat a meal together. Bring yourself, an open heart, an open mind, and an appetite! Invite a friend! Watch the Sunday *Cross Connections* bulletin in February for more details. If you have any questions, please contact Rich Bowman at rbbp@yahoo.com, or the Church Office at (845) 735-2243.

February 7 Youth Super Bowl Sub Sale Fund Raiser

Good Shepherd's Youth will be holding their annual Super Bowl Sub Sale fund raiser on Super Bowl Sunday, February 7. Proceeds will be used to offset the cost of Good Shepherd youth who will attend the 2018 ELCA Youth Gathering in Houston, Texas. Order forms will be available in church on Sunday, January 24 and 31. You can also contact the church office at (845) 735-2243. You'll have your choice of meats, cheeses, veggies, bread, and condiments. The Youth are offering 1, 2, 4 & 6-foot subs. Place your order by Sunday, January 31. Subs will be distributed beginning 11:30 am in the church Fellowship Hall on Sunday, February 7.



WELCOME PASTOR LENA

Our Music Ministry anticipates with joy getting to know and work closely with our new Pastor Lena. Her vision will guide us as we carry on the musical life of our Good Shepherd family, working to fill our worship services with the most beautiful, sacred music possible. Join us!

Sanctuary Choir (Soprano, Alto, Tenor, Bass)	10:30 Worship Leaders	
	Thursday rehearsals	7:30-9:00 pm
Evening Bells (ability to read music)	Monday evenings	6:00-7:00 pm
Renaissance Camerata (audition required, SATB)	Monday evenings	7:00-8:00 pm
CANZONA Youth Orchestra	Monday evenings	8:00-8:45 pm
Sacristy Singers (elementary age, K-6th grade)	Thursdays	4:30-5:30 pm
G.H.B. * God's Holy Bells (elementary, K-6th)	Thursdays	4:30-5:30 pm
The Organ School (private lessons for students)	TBA	
Full Scholarship for gifted members of our Music Ministry		
Cherub Choir (Sunday School, Pre K- 2nd grade)	Sunday mornings	10:30 am
NEW CHOIR - For anyone, any age...	Sunday mornings	11:30-12:00 pm
Learn to sing: beginners welcome!	begins Feb. 7	
Stay for a few minutes after Worship.		
Fun in the Choir Room !		

Lenten Candlelight Organ Meditations - 12:30 pm

Please join us for 30 minutes of quiet prayer meditation with organ/piano sacred music.

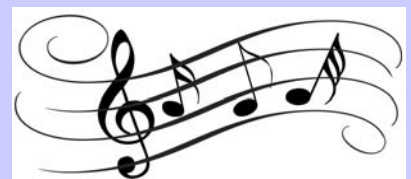
Wednesdays, February 17 & 24; March 2 & 9

Lenten Communiversity Music Classes

For our Wednesday evening Lenten learning opportunities, we will offer two MUSIC CLASSES:

February 17	7:00 pm (Sanctuary)	Standing On The Shoulders of Giants: JOHANN SEBASTIAN BACH, our Lutheran Heritage
March 2	7:00 pm (Sanctuary)	HYMNS OF THE PASSION

Soli Deo Gloria!
Brenda



CONFIRMATION NEWS

6th through 8th Grade Confirmation Classes

Confirmation Class will be held the following evenings, in Fellowship Hall:

- 6th Grade** – Thursday, **February 4** – 7:00 to 8:15 pm
7th Grade – Thursday, **February 11** – 7:00 to 8:15 pm
8th Grade – Thursday, **February 18** – 7:00 to 8:15 pm

Christian Education

Confirmation Family Night – Grades 6th, 7th & 8th – Thursday, February 25
Dinner 7 to 7:30 pm – Program 7:30 to 8:30 pm

For more information, contact the Church Office at (845) 735-2243.

Middle School Confirmation Class Winter Retreat (Grades 6 to 8)

Friday, February 19 to Sunday, February 21, 2016
 at Camp Koinonia

\$120 per person (Make checks payable to “Koinonia”)

Price includes: 2 nights of lodging, transportation, meals, outdoor recreational activities, a campfire, skits, songs, games, worship, and more!

Invite a friend from your Good Shepherd Confirmation Class!

Permission slips and registration available in the church office or on the www.gspr.org website

RSVP by Sunday, January 31st

All forms and payment due to the Church Office by February 1st.

Koinonia is a wonderful retreat center near Port Jervis, NY. The retreat is run by the Lutheran Youth Organization (LYO). Youth will be able to bond over faith and life with other youth their age from around the Metro New York Synod. This is a retreat you don't want to miss! Many who attend, can't wait to go again the following year. It is an outstanding camp experience!

Campers will leave from Good Shepherd's parking lot on Friday, February 19 at 6 pm to car pool, and we'll return to Good Shepherd early afternoon February 21. **For more information, contact Rich Bowman at rpbp@yahoo.com or contact the church office at (845) 735-2243.**

High School Winter Retreat (Grades 9 to 12)

Friday, March 11 to Sunday, March 13, 2016
 at Camp Koinonia

\$120 per person (Make checks payable to “Koinonia”)

Price includes: 2 nights of lodging, transportation, meals, outdoor recreational activities, a campfire, skits, songs, games, worship, and more!

Invite a friend from your Good Shepherd Confirmation Class!

Permission slips and registration available in the church office or on the www.gspr.org website

RSVP by Sunday, February 29th

All forms and payment due to the Church Office by March 1st.

This is a retreat led by the Lutheran Youth Organization of the Metropolitan New York Synod. It is designed for and led by high school students. Teens will explore Romans 10:9—how God saves us and why—through speakers and small group sessions with a Pokémon theme. Youth will grow closer to God and to one another. This is a retreat you don't want to miss! Many who attend, can't wait to go again the following year. It is an outstanding camp experience!

Campers will leave from Good Shepherd's parking lot on Friday, March 11 at 6 pm to car pool, and we'll return to Good Shepherd early afternoon Sunday, March 13. **For more information, contact Rich Bowman at rpbp@yahoo.com or contact the church office at (845) 735-2243.**

WEDNESDAYS IN LENT 2016

Join us on a meaningful Lenten Journey that begins on February 10th, with Ash Wednesday services at 12:15 p.m. and 8:00 p.m. On February 17th we will begin our Wednesday programs, a time for fellowship, a time to enrich our faith lives, and a time to worship in the beauty of our sanctuary. Once again we will start our evenings at 6:00 p.m. with Soup Suppers....delicious, home-made soups. At 7:00 p.m., we will offer a choice of two sessions (see schedule for details), in addition to First Communion Classes for students and parents. The evening will end with the beautiful Holden Evening Prayer at 8:00 p.m.

February 10th Ash Wednesday services –12:15 p.m. and 8:00 p.m.

February 17th

6:00 Soup Supper

7:00 "People of the Passion* – *Merold Westphal*
Johann Sebastian Bach" Standing on the shoulders of this devoted Lutheran musical genius. *Soli Deo Gloria!* – *Brenda Ferguson*

8:00 Holden Evening Prayer

February 24th

6:00 Soup Supper

7:00 "People of the Passion"- *Merold Westphal*
"Exploring the Sacraments of the Christian Church" (*But why does the Lutheran Church have two while the Roman Catholic Church has seven ?*) –*The Reverend Rich Bowman*

8:00 Holden Evening Prayer

March 2nd

6:00 Soup Supper

7:00 "People of the Passion" – *Merold Westphal*
"Hymns of Passion" – Stories behind our hymns of the church universal – *Brenda Ferguson*
First Communion Class – *Debra Thaler*

8:00 Holden Evening Prayer

March 9th

6:00 Soup Supper

7:00 "People of the Passion" – *Merold Westphal*
"Prayer in Art" *Ione Mensing*
First Communion Class – *Debra Thaler*
First Communion Class Parents – *Rich Bowman/Deanna Lauer*

8:00 Holden Evening Prayer

March 16th

6:00 Soup Supper

7:00 "People of the Passion" – *Merold Westphal*
"The Faces of Jesus" – *Ione Mensing*
First Communion Class – *Debra Thaler*
First Communion Class Parents – *Rich Bowman/Deanna Lauer*

8:00 Holden Evening Prayer

GIVE A TEEN A HAPPY VALENTINE'S DAY!

For the teens (male & female) at the Rockland Psychiatric unit, a little Valentine bag would mean a great deal. Please look at the list below and consider putting a smile on their faces. Many of them come from homes with nothing.

Shampoo Soaps Socks
Underwear Brushes
Toothpaste Toothbrushes
Sweatshirts
Journals Pens Candy
Toiletries Combs
Candy and diabetic candy
Puzzle books
Washable markers
Hats & gloves Soft slippers
Arts & crafts Uno & cards Hair clips



SPECIAL DATES

- African-American History Month
- Boy Scout Sunday, *February 7*
- Transfiguration of Our Lord, *February 7*
- Ash Wednesday, *February 10*
- First Sunday in Lent, *February 14*
- Valentine's Day, *February 14*
- President's Day, *February 15*
- Second Sunday in Lent, *February 21*
- Third Sunday in Lent, *February 28*

For up-to-date calendar information, check out our website at:
www.gspr.org



COMING SOON – GLOBAL BARNYARD!

Once again, during Lent, we invite you to fill the Global Barnyard with Moos and Baas, Bleats and Chirps, Buzzes and Oinks....a noisy racket of Sunday School children hopping, banks filled with change, and hearts filled with love and giving.

By making a donation to the Global Barnyard, animals, along with training, are given to families throughout the world, which can change their lives for the better...so along with the noises in the barn, we can add the noise of joy and laughter, of filled stomachs and hopeful conversation around their tables.

Watch *Cross Connections* for updates.

COMMUNICATION REQUEST

We would like to establish a new email distribution list that would enable us to notify folks of an event that is happening at Church, between Sundays, such as a funeral or weather-related meeting cancellation. If you would like to be notified, please fill out your name, cell # and email address, and return it to the Church Office, drop this form in the offering plate, or go to this link to sign up: <http://eepurl.com/Y5XKf>. Thank you!

NAME: _____

CELL # (for text message reminder) _____

EMAIL: _____

Sun	Mon	Tue	Wed	Thu	Fri	Sat
	1 9:30/12:30 Creative Play/UPK CP Ground Hog Day Program 6:00-7:00 Evening Bells 7:00-8:00 Renaissance Camerata 7:30 Prayer Shawl Ministry 8:00-9:00 Canzona Youth Orchestra 9:00 Solos	2 Groundhog Day 9:30/1:00 Creative Play/UPK CP Ground Hog Day Program 1:30 WELCA—Church Parlor 3:30-5:30 Organ School Lessons 6:00-6:45 Organ School Lessons 7:00 Boy Scouts—Fellowship Hall	3 9:30/1:00 Creative Play/UPK 3:30-4:30 Organ School Lessons 6:00-7:00 Organ School Lessons	4 9:30/1:00 Creative Play/UPK 4:30-5:30 Sacristy Singers 7:00 6th Gr. Confirmation—FH 7:30-9:00 Sanctuary Choir	5 9:30/1:00 Creative Play/UPK 3:00-4:00 Organ School 7:45 AA/Fellowship Hall	6
7 Transfiguration Sunday Boy Scout Sunday 8:15 Holy Communion 9:30 Contemporary Holy Comm. Service 9:45 Sanctuary Choir Rehearsal 10:30 Holy Communion/SCS/Boy Scouts 11:30 Coffee Hour 6:00 AA—Fellowship Hall	8 9:30/12:30 Creative Play/UPK 6:00-7:00 Evening Bells 7:00-8:00 Renaissance Camerata 8:00-9:00 Canzona Youth Orchestra 9:00 Solos	9 9:30/1:00 Creative Play/UPK 1:00 Piecemakers—Youth Room 3:30-5:30 Organ School Lessons 6:00-6:45 Organ School Lessons 7:00 Boy Scouts—Fellowship Hall 7:30 CP Exec. Bd. Mtg./Classroom 8:00-9:30 Women's Faith Life Group	10 ASH WEDNESDAY 9:30/1:00 Creative Play/UPK 10:00 Creative Play Governance Bd 12:15 Ash Wednesday Service with Imposition of Ashes 3:30-4:30 Organ School Lessons 4:30 Executive Committee 6:00-7:00 Organ School Lessons 8:00 Ash Wednesday Service with Imposition of Ashes	11 9:30/1:00 Creative Play/UPK 11:30 Staff Meeting 4:30-5:30 Sacristy Singers 7:00 7th Gr. Confirmation—FH 7:30 Sanctuary Choir 8:00 Evangelism Mtg.—Parlor	12 9:30/1:00 Creative Play/UPK 3:00-4:00 Organ School 7:45 AA/Fellowship Hall	13
14 Lent I - Valentine's Day 8:15 Holy Communion 9:30 Contemporary Holy Comm. Service 9:45 Sanctuary Choir rehearsal 10:30 Worship/SCS 11:30 Coffee Hour 6:00 AA—Fellowship Hall	15 President's Day NO Creative Play Church Office Closed 6:00-7:00 Evening Bells 7:00-8:00 Renaissance Camerata 8:00-9:00 Canzona Youth Orchestra 9:00 Solos	16 NO Creative Play 1:00 Piecemakers 3:30-5:30 Organ School Lessons 6:00-6:45 Organ School Lessons 7:00 Boy Scouts—Youth Room 7:00 Food, Faith & Friends—Parlor	17 9:30/1:00 Creative Play/UPK 3:30-4:30 Organ School Lessons 6:00-7:00 Organ School Lessons 6:00-7:00 Soup Supper—FH 7:00-8:00 Lenten Programs 8:00 Holden Evening Prayer Serv.	18 9:30/1:00 Creative Play/UPK 11:30 Staff Meeting 4:30-5:30 Sacristy Singers 7:00 8th Gr. Confirmation—FH 7:30 Sanctuary Choir	19 Koinonia Retreat (6th-8th Grades) 9:30/1:00 Creative Play/UPK 3:00-4:00 Organ School 7:45 AA/Fellowship Hall	20 GOOD SHEPHERD'S 115th BIRTHDAY 9:00 Men's Breakfast
21 Lent II 8:15 Worship Service 9:30 Contemporary Holy Comm. Service 9:45 Sanctuary Choir rehearsal 10:30 Holy Communion/SCS 11:30 Coffee Hour—Parlor 11:30 Church Council Meeting 6:00 AA/Fellowship Hall	22 9:30/1:00 Creative Play/UPK 6:00-7:00 Evening Bells 7:00-8:00 Renaissance Camerata 7:00 Youth & Education Mtg. 8:00-9:00 Canzona Youth Orchestra 9:00 Solos	23 9:30/1:00 Creative Play/UPK 1:00 Piecemakers 3:30-5:30 Organ School Lessons 6:00-6:45 Organ School Lessons 7:00 Boy Scouts—Fellowship Hall	24 9:30/1:00 Creative Play/UPK 10:00/1:30 CP Program—FH 3:30-4:30 Organ School Lessons 6:00-7:00 Organ School Lessons 6:00-7:00 Soup Supper—FH 7:00-8:00 Lenten Programs 8:00 Holden Evening Prayer Serv.	25 9:30/1:00 Creative Play/UPK 10:00/1:30 CP Program—FH 11:30 Staff Meeting 7:00 Confirmation & Family Dinner 6th, 7th & 8th Grades 7:30 Sanctuary Choir	26 9:30/1:00 Creative Play/UPK 3:00-4:00 Organ School 7:45 AA/Fellowship Hall	27
28 Lent III 8:15 Holy Communion Service 9:30 Contemporary Service 9:45 Sanctuary Choir rehearsal 10:30 Worship Service/SCS 11:30 Coffee Hour—Parlor 6:00 AA/Fellowship Hall	29 9:30/1:00 Creative Play/UPK 6:00-7:00 Evening Bells 7:00-8:00 Renaissance Camerata 8:00-9:00 Canzona Youth Orchestra 9:00 Solos					

ORDER FORM

EASTER LILIES & FLOWERS

Deadline for order: March 15, 2016



In Memory of:

In Honor of:

Given by: _____

Enclosed: \$ _____ (suggested donation - \$10)